

z1. NOME DO EMPREENDIMENTO:	VIBRA CAMPO LIMPO
2. ENDEREÇO:	ESTRADA DOS MIRANDAS, 531 – JARDIM MARIA DUARTE
3. RAZÃO SOCIAL:	NOVA QUEBEC EMPREENDIMENTOS IMOBILIARIOS LTDA
4. ENDEREÇO:	MOURATO COELHO, 936 – SALA 01 – PINHEIROS CEP 05.417-001
5. CNPJ:	35.952.674/0001-70
6. TIPO DE EMPREENDIMENTO:	EZEIS (HIS 1 + HIS 2 + R2V)
7. QUANTIDADE DE TORRES:	2 TORRES
8. TIPOLOGIA:	TÉRREO + 20 PAVIMENTOS TIPO (1º AO 20º) + BARRILETE + COBERTURA
9. QUANTIDADE DE APARTAMENTO PAV. TIPO:	8 APARTAMENTOS POR PAVIMENTO
10. TOTAL DE UNIDADES:	324 UNIDADES (198 HIS 1 + 64 HIS 2 + 62 R2V)
11. ÁREA PRIVATIVA TOTAL:	13.276,16 m²
12. ÁREA TOTAL DO TERRENO:	4.650,00 m²
13. DENOMINAÇÃO DE APARTAMENTOS:	

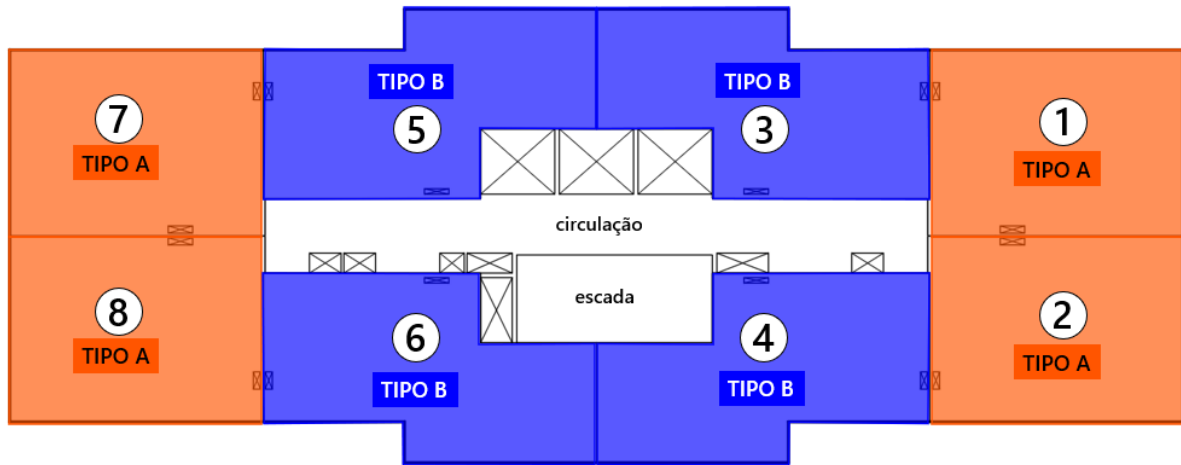
TORRES	TORRE A							
FINAL UNIDADES	FINAL 1 TIPO A	FINAL 2 TIPO A	FINAL 3 TIPO B	FINAL 4 TIPO B	FINAL 5 TIPO B	FINAL 6 TIPO B	FINAL 7 TIPO A	FINAL 8 TIPO A
ÁREA COMPUTÁVEL	40,03 m <sup>2</sup>	40,03 m <sup>2</sup>	41,91 m <sup>2</sup>	41,91 m <sup>2</sup>	41,91 m <sup>2</sup>	41,91 m <sup>2</sup>	40,03 m <sup>2</sup>	40,03 m <sup>2</sup>
20° PAVIMENTO	2001 HIS 1	2002 HIS 1	2003 R2V	2004 R2V	2005 R2V	2006 R2V	2007 HIS 1	2008 HIS 1
19° PAVIMENTO	1901 HIS 1	1902 HIS 1	1903 R2V	1904 R2V	1905 R2V	1906 R2V	1907 HIS 1	1908 HIS 1
18° PAVIMENTO	1801 HIS 1	1802 HIS 1	1803 R2V	1804 R2V	1805 R2V	1806 R2V	1807 HIS 1	1808 HIS 1
17° PAVIMENTO	1701 HIS 1	1702 HIS 1	1703 R2V	1704 R2V	1705 R2V	1706 R2V	1707 HIS 1	1708 HIS 1
16° PAVIMENTO	1601 HIS 1	1602 HIS 1	1603 R2V	1604 R2V	1605 R2V	1606 R2V	1607 HIS 1	1608 HIS 1
15° PAVIMENTO	1501 HIS 1	1502 HIS 1	1503 R2V	1504 R2V	1505 R2V	1506 R2V	1507 HIS 1	1508 HIS 1
14° PAVIMENTO	1401 HIS 1	1402 HIS 1	1403 R2V	1404 R2V	1405 R2V	1406 R2V	1407 HIS 1	1408 HIS 1
13° PAVIMENTO	1301 HIS 1	1302 HIS 1	1303 HIS 2	1304 HIS 2	1305 HIS 2	1306 HIS 2	1307 HIS 1	1308 HIS 1
12° PAVIMENTO	1201 HIS 1	1202 HIS 1	1203 HIS 2	1204 HIS 2	1205 HIS 2	1206 HIS 2	1207 HIS 1	1208 HIS 1
11° PAVIMENTO	1101 HIS 1	1102 HIS 1	1103 HIS 2	1104 HIS 2	1105 HIS 2	1106 HIS 2	1107 HIS 1	1108 HIS 1
10° PAVIMENTO	1001 HIS 1	1002 HIS 1	1003 HIS 2	1004 HIS 2	1005 HIS 2	1006 HIS 2	1007 HIS 1	1008 HIS 1
9° PAVIMENTO	901 HIS 1	902 HIS 1	903 HIS 2	904 HIS 2	905 HIS 2	906 HIS 2	907 HIS 1	908 HIS 1
8° PAVIMENTO	801 HIS 1	802 HIS 1	803 HIS 2	804 HIS 2	805 HIS 2	806 HIS 2	807 HIS 1	808 HIS 1
7° PAVIMENTO	701 HIS 1	702 HIS 1	703 HIS 2	704 HIS 2	705 HIS 2	706 HIS 2	707 HIS 1	708 HIS 1
6° PAVIMENTO	601 HIS 1	602 HIS 1	603 HIS 2	604 HIS 2	605 HIS 2	606 HIS 2	607 HIS 1	608 HIS 1
5° PAVIMENTO	501 HIS 1	502 HIS 1	503 HIS 2	504 HIS 1	505 HIS 2	506 HIS 1	507 HIS 1	508 HIS 1
4° PAVIMENTO	401 HIS 1	402 HIS 1	403 HIS 1	404 HIS 1	405 HIS 1	406 HIS 1	407 HIS 1	408 HIS 1
3° PAVIMENTO	301 HIS 1	302 HIS 1	303 HIS 1	304 HIS 1	305 HIS 1	306 HIS 1	307 HIS 1	308 HIS 1
2° PAVIMENTO	201 HIS 1	202 HIS 1	203 HIS 1	204 HIS 1	205 HIS 1	206 HIS 1	207 HIS 1	208 HIS 1
1° PAVIMENTO	101 HIS 1	102 HIS 1	103 R2V	104 HIS 1	105 R2V	106 HIS 1	107 HIS 1	108 HIS 1
FINAL UNIDADES	FINAL 1 TIPO C	FINAL 2 TIPO C	FINAL 3 TIPO D	FINAL 4 TIPO D	FINAL 5 TIPO D	FINAL 6 TIPO D	FINAL 7 TIPO C	FINAL 8 TIPO C
TÉRREO			3 HIS 1		5 HIS 1			

TORRES	TORRE B							
FINAL UNIDADES	FINAL 1 TIPO A	FINAL 2 TIPO A	FINAL 3 TIPO B	FINAL 4 TIPO B	FINAL 5 TIPO B	FINAL 6 TIPO B	FINAL 7 TIPO A	FINAL 8 TIPO A
ÁREA COMPUTÁVEL	40,03 m <sup>2</sup>	40,03 m <sup>2</sup>	41,91 m <sup>2</sup>	41,91 m <sup>2</sup>	41,91 m <sup>2</sup>	41,91 m <sup>2</sup>	40,03 m <sup>2</sup>	40,03 m <sup>2</sup>
20° PAVIMENTO	2001 HIS 1	2002 HIS 1	2003 R2V	2004 R2V	2005 R2V	2006 R2V	2007 HIS 1	2008 HIS 1
19° PAVIMENTO	1901 HIS 1	1902 HIS 1	1903 R2V	1904 R2V	1905 R2V	1906 R2V	1907 HIS 1	1908 HIS 1
18° PAVIMENTO	1801 HIS 1	1802 HIS 1	1803 R2V	1804 R2V	1805 R2V	1806 R2V	1807 HIS 1	1808 HIS 1
17° PAVIMENTO	1701 HIS 1	1702 HIS 1	1703 R2V	1704 R2V	1705 R2V	1706 R2V	1707 HIS 1	1708 HIS 1
16° PAVIMENTO	1601 HIS 1	1602 HIS 1	1603 R2V	1604 R2V	1605 R2V	1606 R2V	1607 HIS 1	1608 HIS 1
15° PAVIMENTO	1501 HIS 1	1502 HIS 1	1503 R2V	1504 R2V	1505 R2V	1506 R2V	1507 HIS 1	1508 HIS 1
14° PAVIMENTO	1401 HIS 1	1402 HIS 1	1403 R2V	1404 R2V	1405 R2V	1406 R2V	1407 HIS 1	1408 HIS 1
13° PAVIMENTO	1301 HIS 1	1302 HIS 1	1303 R2V	1304 R2V	1305 R2V	1306 R2V	1307 HIS 1	1308 HIS 1
12° PAVIMENTO	1201 HIS 1	1202 HIS 1	1203 HIS2	1204 HIS 2	1205 HIS2	1206 HIS 2	1207 HIS 1	1208 HIS 1
11° PAVIMENTO	1101 HIS 1	1102 HIS 1	1103 HIS2	1104 HIS 2	1105 HIS2	1106 HIS 2	1107 HIS 1	1108 HIS 1
10° PAVIMENTO	1001 HIS 1	1002 HIS 1	1003 HIS2	1004 HIS 2	1005 HIS2	1006 HIS 2	1007 HIS 1	1008 HIS 1
9° PAVIMENTO	901 HIS 1	902 HIS 1	903 HIS2	904 HIS 2	905 HIS2	906 HIS 2	907 HIS 1	908 HIS 1
8° PAVIMENTO	801 HIS 1	802 HIS 1	803 HIS2	804 HIS 2	805 HIS2	806 HIS 2	807 HIS 1	808 HIS 1
7° PAVIMENTO	701 HIS 1	702 HIS 1	703 HIS2	704 HIS 2	705 HIS2	706 HIS 2	707 HIS 1	708 HIS 1
6° PAVIMENTO	601 HIS 1	602 HIS 1	603 HIS2	604 HIS 2	605 HIS2	606 HIS 2	607 HIS 1	608 HIS 1
5° PAVIMENTO	501 HIS 1	502 HIS 1	503 HIS2	504 HIS 1	505 HIS2	506 HIS 1	507 HIS 1	508 HIS 1
4° PAVIMENTO	401 HIS 1	402 HIS 1	403 HIS 1	404 HIS 1	405 HIS 1	406 HIS 1	407 HIS 1	408 HIS 1
3° PAVIMENTO	301 HIS 1	302 HIS 1	303 HIS 1	304 HIS 1	305 HIS 1	306 HIS 1	307 HIS 1	308 HIS 1
2° PAVIMENTO	201 HIS 1	202 HIS 1	203 HIS 1	204 HIS 1	205 HIS 1	206 HIS 1	207 HIS 1	208 HIS 1
1° PAVIMENTO	101 HIS 1	102 HIS 1	103 HIS 1	104 HIS 1	105 HIS 1	106 HIS 1	107 HIS 1	108 HIS 1
FINAL UNIDADES	FINAL 1 TIPO C	FINAL 2 TIPO C	FINAL 3 TIPO D	FINAL 4 TIPO D	FINAL 5 TIPO D	FINAL 6 TIPO D	FINAL 7 TIPO C	FINAL 8 TIPO C
TÉRREO	1 HIS 1		3 HIS 1					

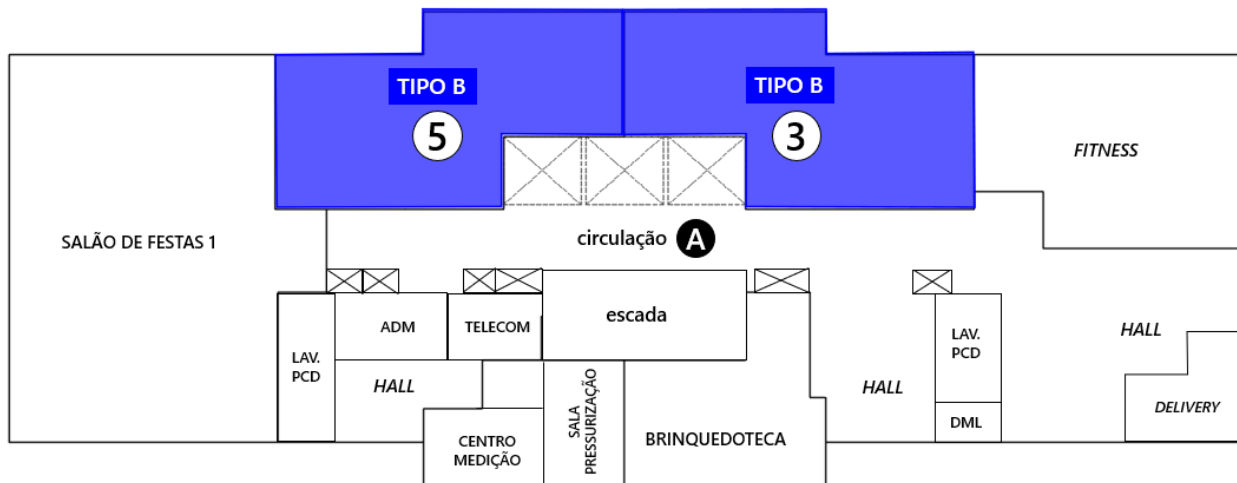
TIPOLOGIA	TOTAL		HIS1		HIS 2		R2V	
	Nº UNID.	Á COMP.	Nº UNID.	Á. COMP.	Nº UNID.	Á. COMP.	Nº UNID.	Á. COMP.
TOTAL - LOTE 1	324	13.284,86	198	7.996,42	64	2.682,24	62	2.598,42
PROPORÇÕES (%)	100%		60,1920%		20,1902%		19,5593%	

**TIPO A** Área privative 40,03m<sup>2</sup>

**TIPO B** Área privative 41,91m<sup>2</sup>



## PAVIMENTO TIPO TORRES A e B



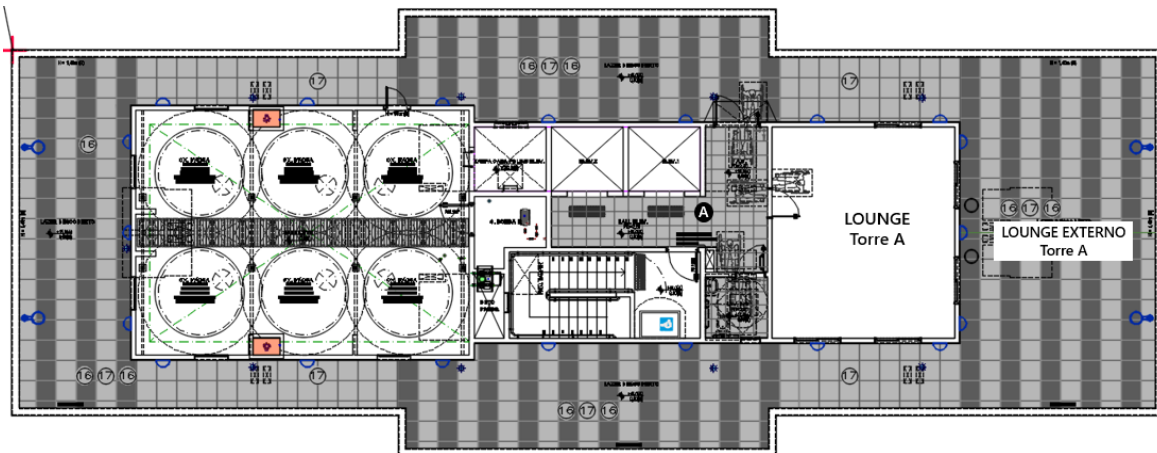
## TÉRREO TORRE A



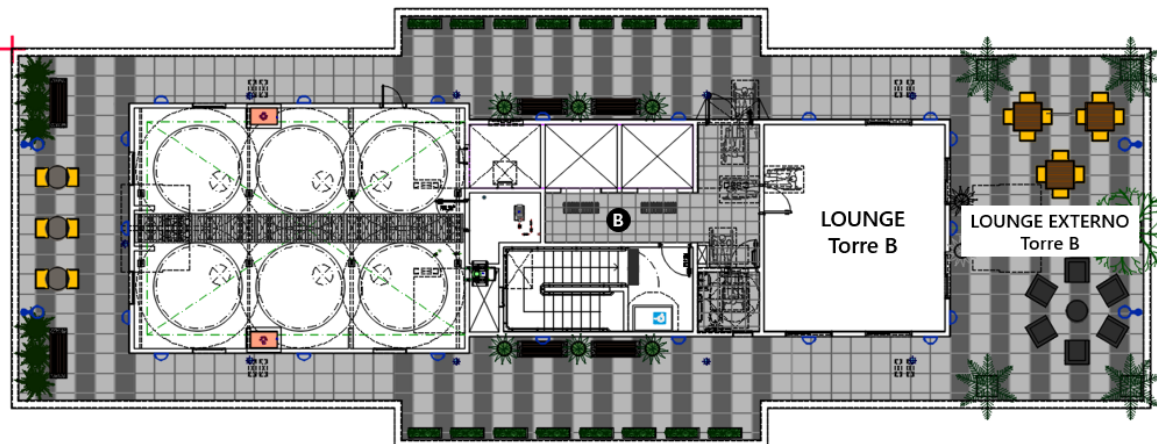
## TÉRREO TORRE B



**IMPLANTAÇÃO**



**LAZER COBERTURA - TORRE A**



**LAZER COBERTURA - TORRE B**

14. VAGAS:	01 VAGA PCD
15. ÁREA DE RESERVA DE CALÇADA:	NÃO
16. ÁREA DE MELHORAMENTO VIÁRIO:	NÃO
17. CONTAMINAÇÃO DO SOLO:	NÃO

**OBSERVAÇÕES:**

- RECOMENDAMOS A NÃO UTILIZAÇÃO DO LENÇOL FREÁTICO.
- PREVER NO MEMÓRIAL DE VENDAS E MEMORIAL DE INCORPORAÇÃO NOTA AFRMANDO QUE QUANDO HOUVER UNIDADE ADAPTADA PARA PESSOAS PCD, PODEMOS TER ALTERAÇÃO NO PEITORIL E ALTURA DO CAIXILHO DO BANHEIRO DA UNIDADE.

## INFORMAÇÕES ADICIONAIS DE PROJETO

1. PROJETO DE ARQUITETURA:	RUBIO&LUONGO ARQUITETURA
2. PROJETO DE PAISAGISMO	ROBERTA VENTURA ARQUITETURA E PAISAGISMO
3. PROJETO DE DECORAÇÃO	PRISCILLA D'ATTILIO ARQUITETURA INTERIORES e LUCIANA TOMAS ARQUITETURA

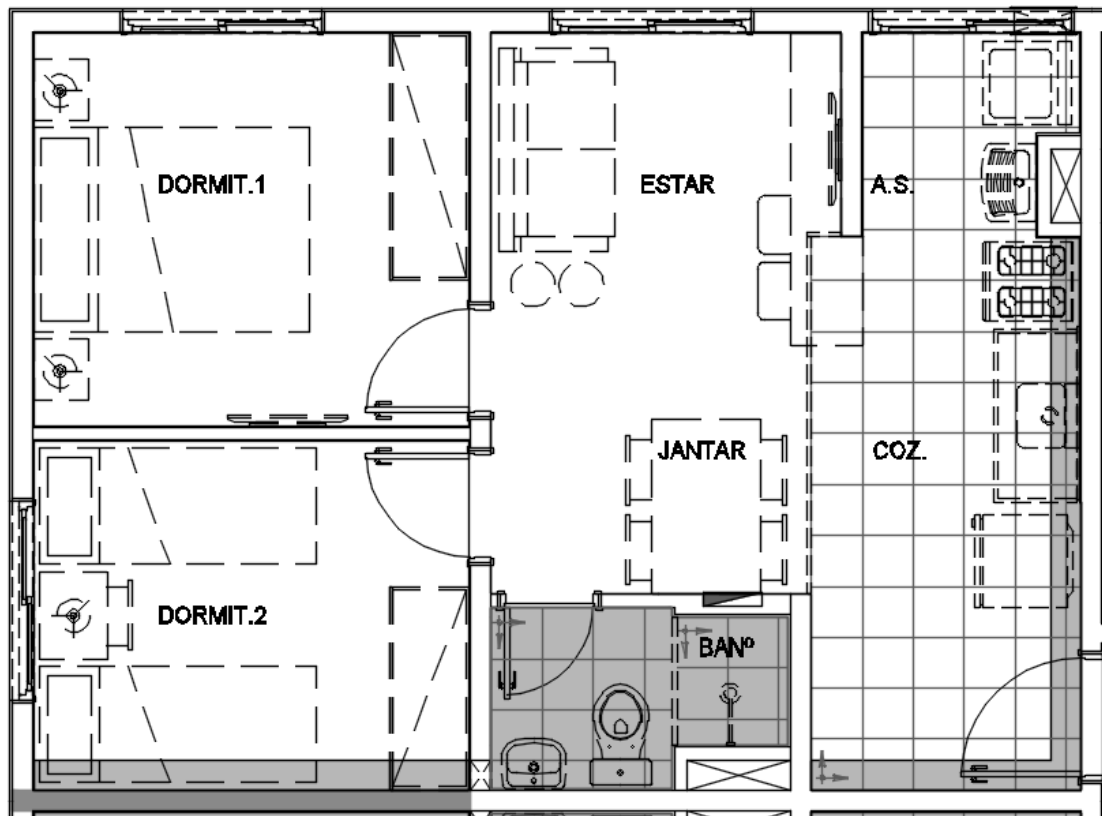
## 4. ÁREAS COMUNS:

- a) 03 ELEVADORES POR TORRE, TOTALIZANDO 06 ELEVADORES
- b) SISTEMA CONSTRUTIVO EM ALVENARIA ESTRUTURAL
- c) CERCA ELÉTRICA PERIMETRAL E INFRA PARA CÂMERAS NAS ÁREAS COMUNS (TUBULAÇÃO SECA);
- d) INFRAESTRUTURA PARA AS CÂMERAS NAS ÁREAS COMUNS (INTERNAS);
- e) BICICLETÁRIO COBERTO: PREVISÃO PARA **APROXIMADAMENTE** 50 BICICLETAS;
- f) ÁREAS DE LAZER SERÃO ENTREGUES DECORADAS E EQUIPADAS DE ACORDO COM O MEMORIAL DESCRITIVO DO CLIENTE;
- g) SISTEMA CONSTRUTIVO EM ALVENARIA ESTRUTURAL (**AS PAREDES NÃO PODERÃO SER ALTERADAS POIS POSSUEM FUNÇÃO ESTRUTURAL**);
- h) NÃO FOI PREVISTA CARGA ELÉTRICA PARA INSTALAÇÃO DE AR-CONDICIONADO;

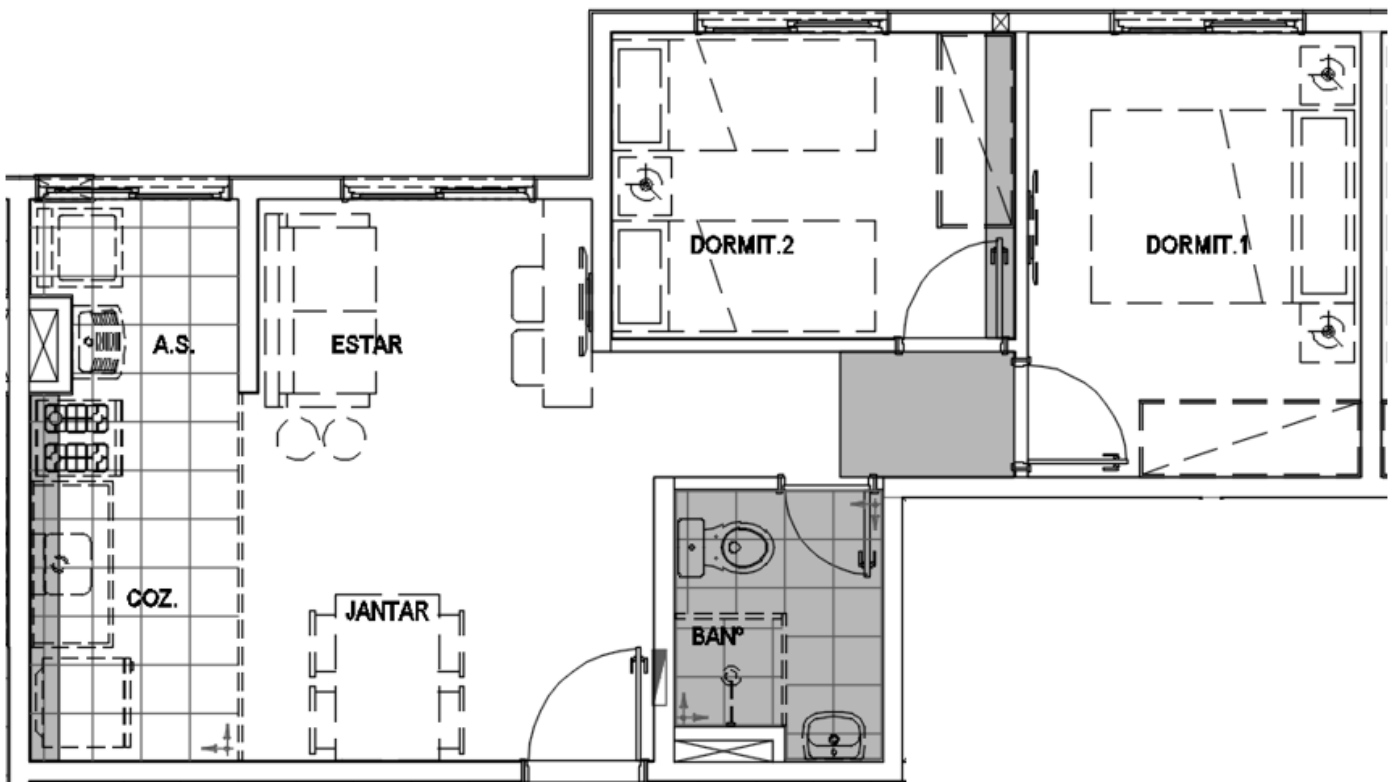
## 5. UNIDADES TIPO

TIPOLOGIA	FINAL UNIDADE	Á. PRIVATIVA	DORMITÓRIOS	VENTILAÇÃO BANHEIRO	VENTILAÇÃO A.S./APA/COZ.
A	FINAL 01 / 02 / 07 / 08	40,03 m <sup>2</sup>	2 DORM	MECÂNICA	NATURAL
B	FINAL 03 / 04 / 05 / 06	41,91 m <sup>2</sup>	2 DORM	MECÂNICA	NATURAL

- BANCADA COM CUBA EMBUTIDA DA COZINHA INTERIÇA EM MÁRMORE SINTÉTICO
- ÁREA DE SERVIÇO / COZINHA COM VENTILAÇÃO NATURAL
- TORNEIRAS COM REDUTORES DE VAZÃO E AREJADORES (ÁREAS COMUNS E APARTAMENTOS);
- PONTO PARA CHUVEIRO COM AQUECEDOR DE PASSAGEM A GÁS (SENDO QUE A AQUISIÇÃO E INSTALAÇÃO DESTES FICARÁ A CARGO DO PROPRIETÁRIO);
- BANHEIRO COM VENTILAÇÃO MECÂNICA;
- BACIAS COM DUPLO ACIONAMENTO (NAS ÁREAS COMUNS E NOS APARTAMENTOS);
- **A PRINCÍPIO** ENTREGAREMOS PISO LAMINADO NOS DORMITÓRIOS – MAS NO MEMORIAL DO CLIENTE SERÁ ESPECIFICADO: "LAMINADO DE MADEIRA OU PISO VINÍLICO OU CONTRAPISO COM ATENUANTE ACÚSTICO".
- COZINHA E LIVING COM CONCEITO ABERTO;
- PORTA DE ENTRADA COM PREENCHIMENTO REFORÇADO;
- PORTAS E GUARNIÇÕES COM MADEIRA CERTIFICADA;
- MEDIÇÃO INDIVIDUALIZADA DE ÁGUA;
- ENTREGA DE INFRAESTRUTURA PARA MEDIÇÃO INDIVIDUALIZADA DE GÁS;
- NÃO FOI PREVISTA CARGA ELÉTRICA PARA INSTALAÇÃO DE AR-CONDICIONADO;



PLANTA TIPOLOGIA A - 40,03m<sup>2</sup>

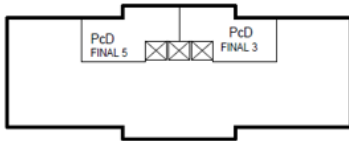


PLANTA TIPOLOGIA B - 41,91m<sup>2</sup>

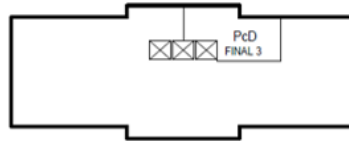
6. UNIDADES PCD

TOTAL DE 10 UNIDADES ADPTÁVEIS PARA PCD

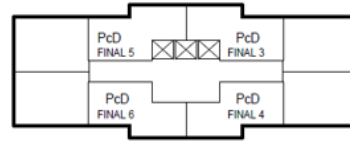
## MAPA DE UNIDADES ADAPTÁVEIS



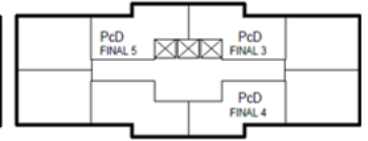
PLANTA TÉRREO - TORRE A



PLANTA TÉRREO - TORRE B



PLANTA 1º PAVIMENTO  
TORRE A



PLANTA 1º PAVIMENTO  
TORRE B

